

Product Sheet

H_CLDN6 LLC1 Cell Line

Catalog number: GM-C25100

Version 3.3.1.250704

| | |
|------------------------------|---|
| Description | H_CLDN6 LLC1 Cell Line is a clonal stable LLC1 cell line that constitutively expresses the human CLDN6 gene, constructed using lentiviral technology. |
| Quantity | 5E6 Cells per vial, 1 mL |
| Product Format | 3 vials of frozen cells |
| Shipping | Shipped on dry ice |
| Storage Conditions | Liquid nitrogen immediately upon receipt |
| Target | Human_CLDN6 |
| Gene ID/Uniprot ID | P56747 |
| Host Cell | LLC1 |
| Recovery Medium | DMEM+10% FBS+1% P.S |
| Growth medium | DMEM+10% FBS+1% P.S+1 µg/mL Puromycin |
| Note | None |
| Freezing Medium | 90% FBS+10% DMSO |
| Growth properties | Mixed: adherent and suspension |
| Growth Conditions | 37°C, 5% CO ₂ |
| Mycoplasma Testing | The cell line has been screened to confirm the absence of Mycoplasma species. |
| Safety considerations | Biosafety Level 2 |
| Note | It is recommended to expand the cell culture and store a minimum of 10 vials at an early passage for potential future use. |

Materials

| Reagent | Manufacturer/Catalogue No. |
|-----------------------------|--|
| DMEM | Gibco/C11995500BT |
| Fetal Bovine Serum | ExCell/FSP500 |
| Pen/Strep | Thermo/15140-122 |
| Puromycin | Genomeditech/ GM-040401 |
| Anti-CLDN6/9 hIgG1 Antibody | Genomeditech/ GM-49724AB |

Figures

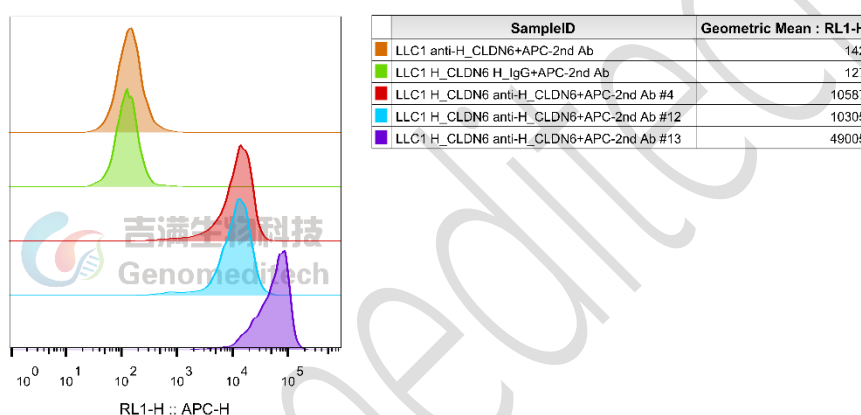


Figure 1 | H_CLDN6 LLC1 Cell Line (Cat. GM-C25100) was determined by flow cytometry using Anti-CLDN6/9 hIgG1 Antibody (Cat. [GM-49724AB](#)).

Cell Recovery

Recovery Medium: DMEM+10% FBS+1% P.S

To insure the highest level of viability, thaw the vial and initiate the culture as soon as possible upon receipt. If upon arrival, continued storage of the frozen culture is necessary, it should be stored in liquid nitrogen vapor phase and not at -70°C. Storage at -70°C will result in loss of viability.

- Thaw the vial by gentle agitation in a 37°C water bath. To reduce the possibility of contamination, keep the O-ring and cap out of the water. Thawing should be rapid (approximately 2 - 3 minutes).
- Remove the vial from the water bath as soon as the contents are thawed, and decontaminate by dipping in or spraying with 70% ethanol. All of the operations from this point on should be carried out under strict aseptic conditions.
- Transfer the vial contents to a centrifuge tube containing 5.0 mL complete culture medium and spin at approximately 176 x g for 5 minutes. Discard supernatant.
- Resuspend cell pellet with the recommended recovery medium. And dispense into appropriate culture dishes.

- e) Incubate the culture at 37°C in a suitable incubator. A 5% CO₂ in air atmosphere is recommended if using the medium described on this product sheet.

Cell Freezing

Freezing Medium: 90% FBS+10% DMSO

- Centrifuge at 176 x g for 3 minutes to collect cells.
- Resuspend the cells in pre-cooled freezing medium and adjust the cell density to 5E6 cells/mL.
- Aliquot 1 mL into each vial.
- Place the vial in a controlled-rate freezing container and store at -80°C for at least 1 day, then transfer to liquid nitrogen as soon as possible.

Cell passage

Growth medium: DMEM+10% FBS+1% P.S+1 µg/mL Puromycin

For the first 1 to 2 passages post-resuscitation, use the recovery medium. Once the cells have stabilized, switch to a growth medium.

- Under normal conditions, these cells exist as both adherent and round suspension cells.
- When changing the medium, take care to retain the suspension cells. During passaging, collect both the adherent and suspension cells together before subculturing.
- Add 1.0 mL of 0.25% (w/v) Trypsin-EDTA solution to dish and observe cells under an inverted microscope until cell layer is dispersed (usually within 1 to 2 minutes at 37°C).
- Note: To avoid clumping do not agitate the cells by hitting or shaking the flask while waiting for the cells to detach. Cells that are difficult to detach may be placed at 37°C to facilitate dispersal.
- Add 2.0 mL of growth medium to mix well and aspirate cells by gently pipetting.
- After centrifugation, resuspend the pellet and add appropriate aliquots of the cell suspension to new culture vessels.
- Incubate cultures at 37°C.

Subcultivation Ratio: A subcultivation ratio of 1:2 - 1:4 is recommended

Medium Renewal: Every 2 to 3 days

Notes

- After the stabilization of the cell condition, there will be fewer dead cells post-passage, the cell growth rate will tend to stabilize, cell morphology will become uniform, and the cells will appear robust.

Sequence

CLDN6 [P56747](#)

MASAGMQILGVVLTLLGWVNGLVSCALPMWKVTAFIGNSIVVAQVVWEGLWMSCVVQSTGQMCKVYD
SLLALPQDLQAARALCVIALLVLFGLLVYLAGAKCTTCVEEKDSKARLVLTSGIVFVVISGVLTLIPVCWTAH

AIIRDFYNPLVAEAQKRELGLASLYLGWAASGLLLLGGGLLCCTCPSSGGSQGPHSHYMARYSTSAPAIRGPSEY
PTKNYV*

Related Products

| CLDN18 | |
|--|---|
| Cynomolgus_CLDN18.2-eGFP CHO-K1 Cell Line | H_CLDN18(isoform2)-eGFP 293 Cell Line |
| H_CLDN18.1-eGFP HEK-293 Cell Line | H_CLDN18.2 MC38 Cell Line |
| H_CLDN18.2 MKN45 Cell Line | H_CLDN18.2 MKN45 Cell Line(High Expression) |
| H_CLDN18.2 MKN45 Cell Line(Low Expression) | H_CLDN18.2 MKN45 Cell Line(Medium Expression) |
| H_CLDN18.2(isoform2) CHO-K1 Cell Line | H_CLDN18.2-eGFP CT-26 Cell Line |
| Mouse_CLDN18.2-eGFP CHO-K1 Cell Line | Rat_CLDN18.2-eGFP CHO-K1 Cell Line |
| Rhesus_CLDN18.2-eGFP CHO-K1 Cell Line | |
| Anti-CLDN18.2 hIgG1 Reference Antibody (IMAB362) | Anti-CLDN18.2 hIgG1 Antibody(LM-102) |
| Anti-CLDN18.2 hIgG1 Antibody(Zolbetuximab) | |
| CLDN3 | |
| H_CLDN3 HEK-293 Cell Line | |
| Anti-CLDN3 hIgG1 Antibody(H4G3) | |
| CLDN4 | |
| H_CLDN4 HEK-293 Cell Line | |
| Anti-CLDN4 hIgG1 Antibody(4B8) | |
| CLDN6 | |
| Cynomolgus_CLDN6 CHO-K1 Cell Line | H_CLDN6 CHO-K1 Cell Line |
| H_CLDN6 HEK-293 Cell Line | Mouse_CLDN6 CHO-K1 Cell Line |
| Rat_CLDN6 CHO-K1 Cell Line | Rhesus_CLDN6 CHO-K1 Cell Line |
| Anti-Claudin6 hIgG1 Reference Antibody | Anti-CLDN6/9 hIgG1 Antibody |
| CLDN9 | |
| H_CLDN9 CHO-K1 Cell Line | H_CLDN9-eGFP HEK-293 Cell Line |
| CLDN1 | |
| H_CLDN1 HCT116 Cell Line | |
| Anti-CLDN1 hIgG1 Reference Antibody (Lixubio) | |

License Agreement:

By purchasing and using this cell line product, the user voluntarily agrees to accept and abide by the following policies:

- This cell line product is restricted to research use only and shall not be used for any commercial purposes.
- This product is strictly prohibited from being used in the diagnosis or treatment of human or animal diseases, and shall not be directly used in experiments involving humans.

- Users are not permitted to modify the cell line in any way, nor to share, distribute, sell, sublicense, or otherwise transfer the licensed materials or their progeny to other laboratories, departments, research institutes, hospitals, universities, biotechnology companies, or any other third parties, except for research activities outsourced on behalf of the licensee. If the product is intended to be transferred to a third party, used for commercial development, preclinical or clinical drug functional validation, commercial production testing, or any other applications beyond the scope of this statement, prior written permission must be obtained from Genomeditech (Shanghai) Co.,Ltd. For details, please contact Genomeditech (Shanghai) Co.,Ltd.

Genomeditech